

# GULET LIBRA

Unobtrusive Luxury

6 cabins • 12 guests • 4 crew • Length overall (LOA): 34 m • Length: 28 m • LWL: 23,9 m • Beam: 7 m





AFT DINING AREA  
COMFORTABLE  
SEATING FOR UP TO  
12 GUESTS UNDER  
COMPLETELY  
SHADED AREA





AL FRESCO BREAKFAST,  
WHAT A BEAUTIFUL WAY  
TO START RELAXED DAY





UNIQUE POINT  
OF GULET LIBRA  
- BEAUTIFUL AND  
SPACIOUS MID AREA  
WHERE LOUNGE  
SETTING IS PLACED  
(VIEW TOWARD THE AFT)









EVERY PART OF LIBRA'S  
DECK IS ADJUSTED AND  
DESIGNED FOR PURPOSE  
OF RELAXATION AND  
ENJOYMENT



ROMANTIC AND  
ELEGANT WITH  
BEAUTIFULLY  
VARNISHED WOOD  
LIBRA RADIATES  
SOOTHING  
ATMOSPHERE







SALON AND OPEN GALLEY

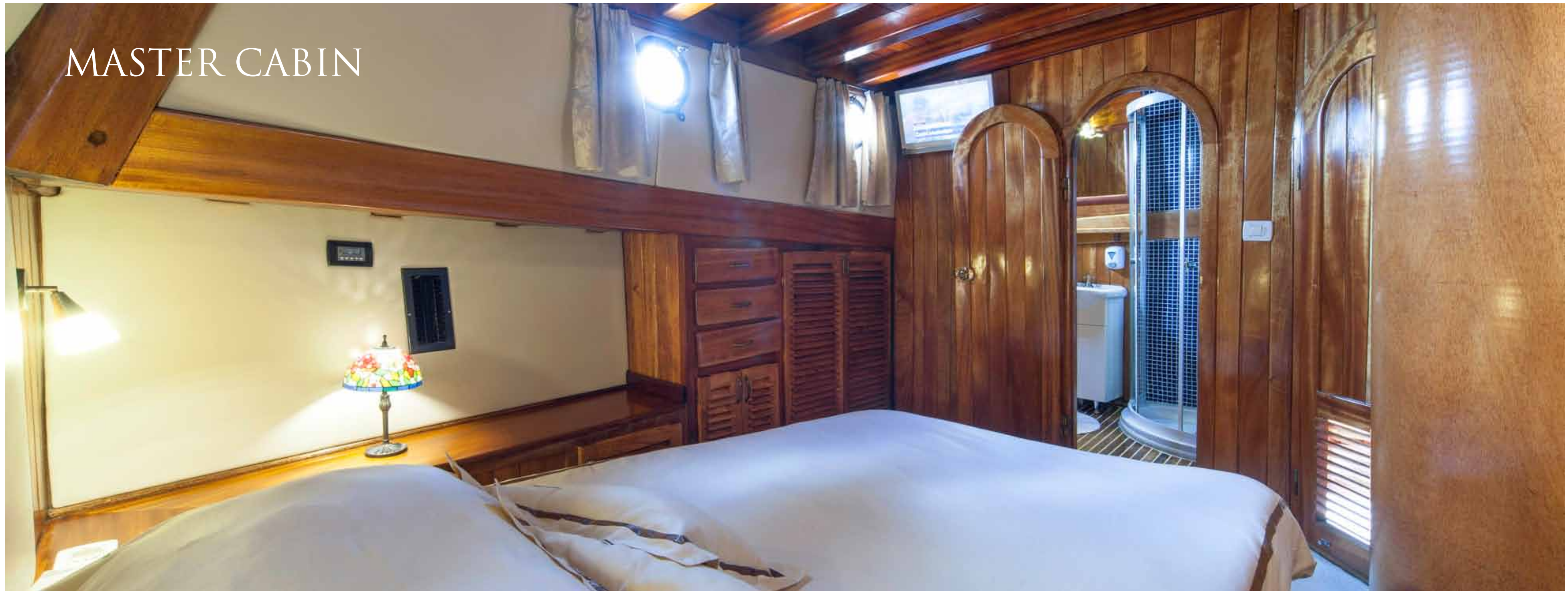




TWO MASTER CABINS  
ARE PLACED IN THE  
FRONT AREA WITH  
SEPARATE ENTRANCE  
FROM OTHER 4  
DOUBLE BED CABINS



# MASTER CABIN







EN SUITE BATHROOM  
IN EACH CABIN



DOUBLE BED  
CABIN – ONE OF  
4 DOUBLE BED  
CABINS ENTERED  
FROM THE SALON







# GULET LIBRA

## GENERAL

Lenght overall (LOA): 34,00 m; Lenght: 28,00 m  
LWL: 23,90 m  
Beam: 7,00 m  
Built: Marmaris, Turkey, 1997 refit 2014  
Construction material: Mahogany  
Guest capacity: 12 in 6 double bed en-suite cabins  
Speed: 9 kts cruising – 12 kts max  
Sails: Jibs – 3, main, mizzen

## ENGINE & MACHINERY

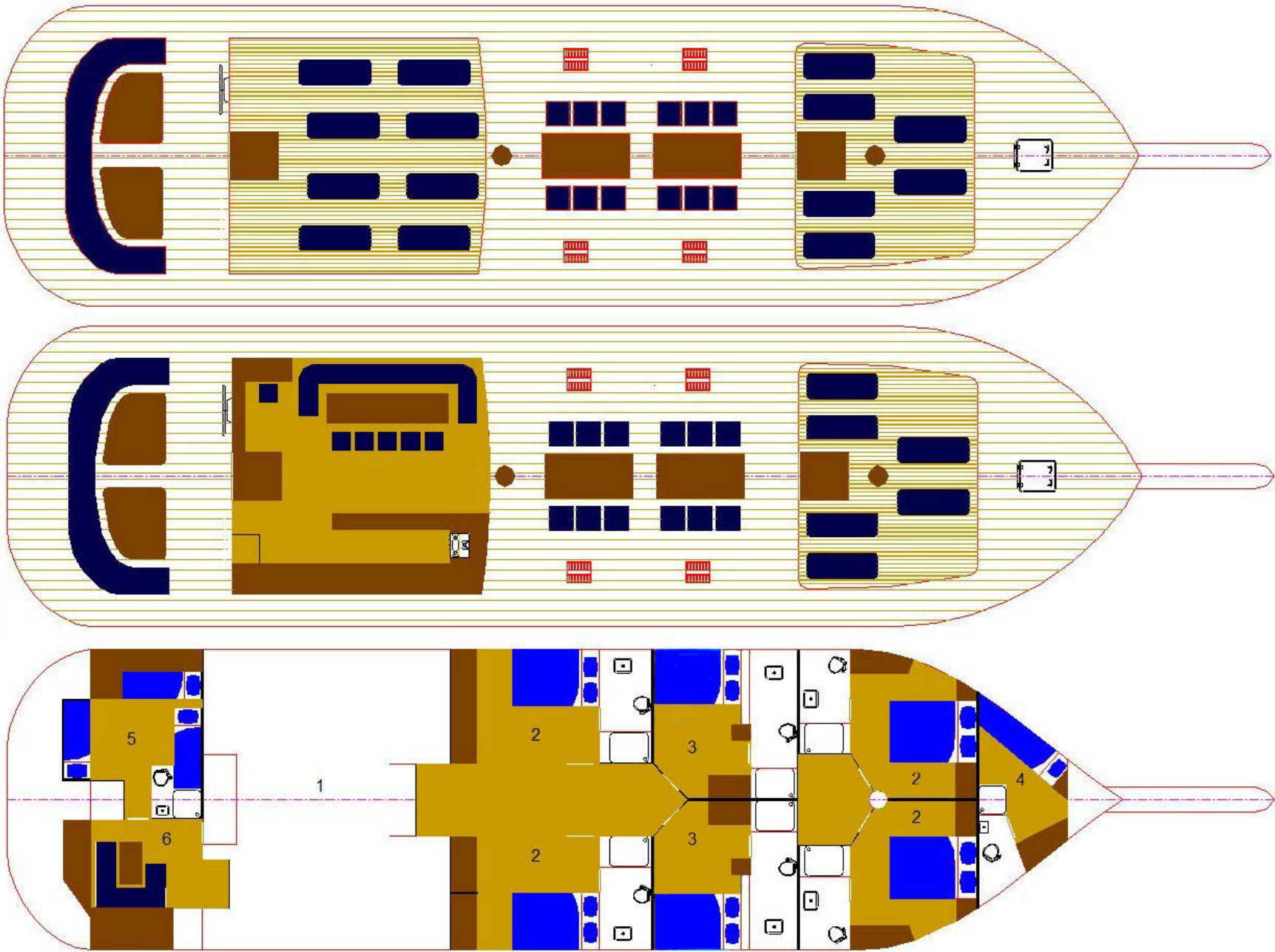
Type: MAN L x E 435 HP  
Generator: 2 ( 1x 16 kw, 1 x 20 kw, ONAN, silent)  
Air condition: reverse cycle in all spaces with separate control units in each cabin  
Electricity: 12 V / 24 V / 220 V

## ON BOARD AMENITIES

- music & TV in salon and each cabin, DVD player in saloon
- Wi-Fi internet, Library
- dinghy Barracuda 5m; outboard: Mercury 90 hp
- shower on deck

## TOYS ON BOARD

- windsurf, sea kayak, snorkeling and water skiing equipment
- barbecue (grill)







TAKE A DEEP BREATH...





...KEEP IT...





EXHALE. RELAX. SAIL ON.